



YORKSHIRE DALES
National Park Authority

Yorkshire Dales Development Framework

Housing Development Plan Call for Housing Sites 2009

This site has been submitted to the National Park Authority as an expression of interest in releasing land for housing development. It is the consequence of a 'call for sites' that took place in January and February 2009. Further details of this process and its objectives can be found on the Authority's [website](#).

The Authority's Housing Working Group has now carried out a first sift and recommended this site to go forward to the next stage of technical evaluation. This will look at issues such as vehicle and pedestrian access, suitability for affordable housing, flood risk, drainage, archaeology and wildlife.

The Housing Working Group will then recommend sites that it considers suitable for allocation in a draft Housing Development Plan. This will be reported to the Authority with a recommendation to issue it for public consultation.

If you wish to discuss this or any other housing policy matter please contact.

Peter Stockton
Yorkshire Dales National Park Authority
Yoredale
Bainbridge
Leyburn
DL8 3EL
(01969) 652334

Or email peter.stockton@yorkshiredales.org.uk

Aysgarth

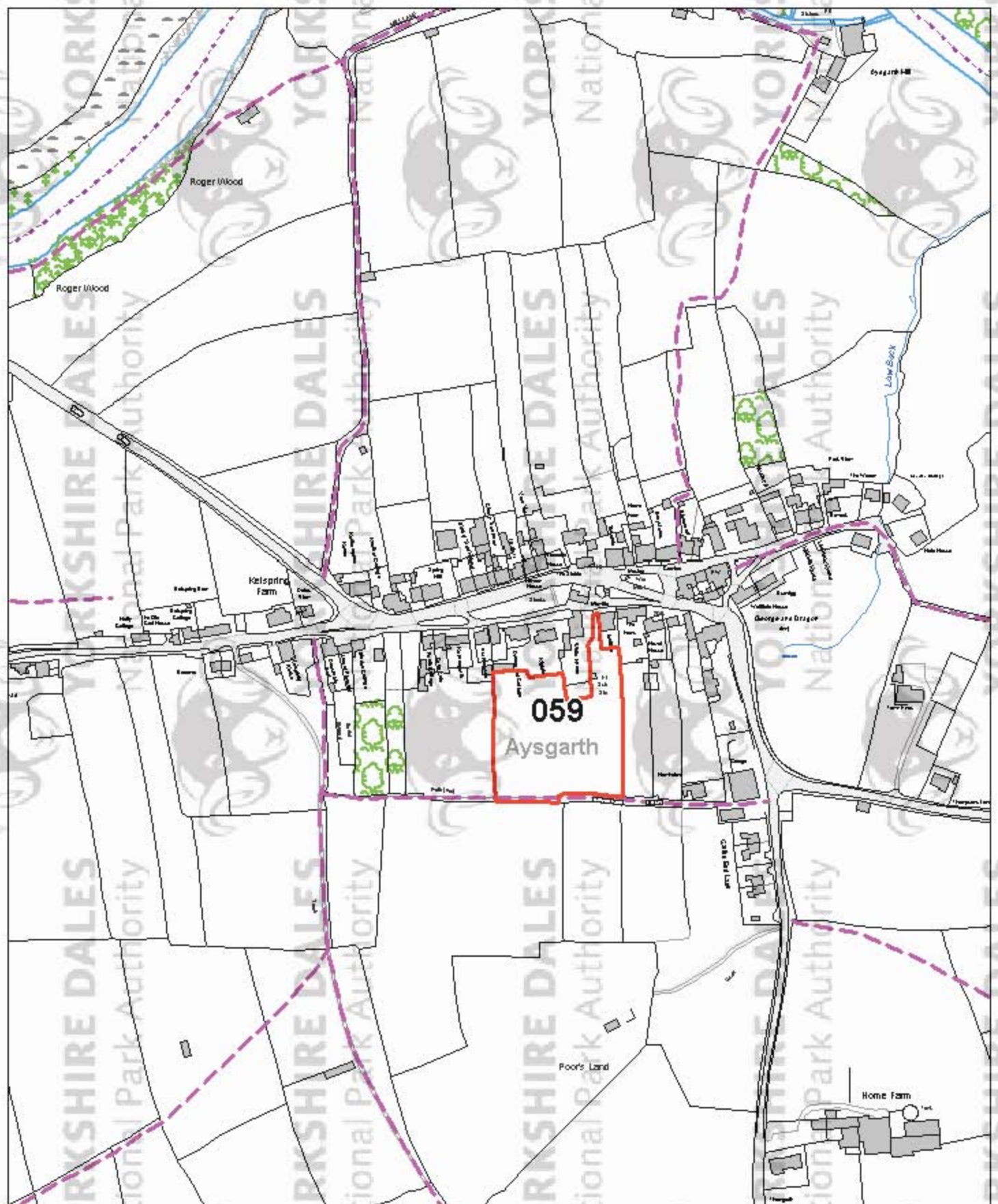
Draft Housing Development Plan - Site for further investigations

Scale 1:2500

August 2009



YORKSHIRE DALES
National Park Authority



This map is based upon Ordnance Survey material with the permission of Ordnance Survey on behalf of the Controller of Her Majesty's Stationery Office © Crown copyright.

Unauthorised reproduction infringes Crown copyright and may lead to prosecution or civil proceedings. 100023740
Additional information: © Yorkshire Dales National Park Authority